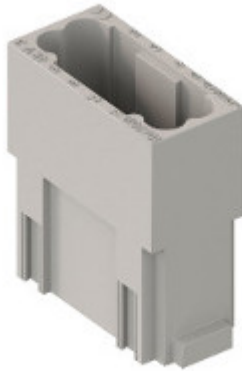



Part number

CX 12 DM



Brief description:

male insert, 12 poles, crimp connection, 10A, 250V, 1 module, modular units MIXO series

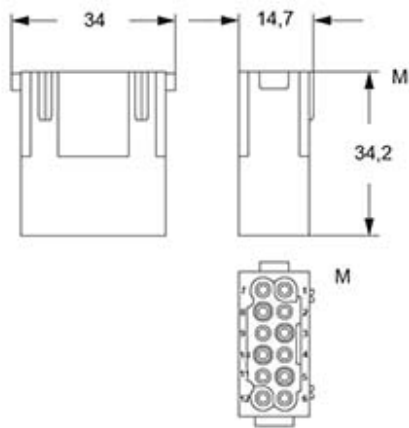
Product description		Approvals / Standards	
Model	male insert	Reference standard	EN 61984 (2001-11)
Version	Crimp connection	Quality mark	 EAC
Product type	for male contacts 10A	Conformity	CQC, CE
Family	MIXO series, customizable inserts	General ordering information	
Size	1 module	EAN13 code	8015747042062
N. of poles	12 poles	Tariff number	85369095
Technical data		Packaging Information	
Current	10 A (A.C.)	Packaging length	180,00 mm
Voltage	250 V	Packaging height	130,00 mm
Rated impulse withstand voltage	4kV	Packaging width	150,00 mm
Pollution degree	3	Packaging weight	0,80 kg
Operating temperature range (min, max)	-40°C ... +125°C	Packaging volume	3,51 dm ³
IP degree of protection	IP20 without enclosure; IP65/IP66/IP67/IP68 with enclosure	Packaging description	Carton box
Further technical details		Packaging quantity	60 Pcs
Characteristics according to EN 61984	10A 250V 2.5kV 3; 10A 250V 4kV 2	Packaging EAN code	8015747221320
Insulation resistance	≥ 10 GΩ	Sub-packaging length	35,00 mm
Rated voltage according to UL/CSA	600V	Sub-packaging height	40,00 mm
UL 94 flammability rating	V-0	Sub-packaging width	155,00 mm
Weight	11,00 g	Sub-packaging weight	0,13 kg
		Sub-packaging volume	0,22 dm ³
		Sub-packaging description	Carton
		Sub-packaging quantity	10 Pcs
		Sub-packaging EAN barcode	8015747042079

Part number

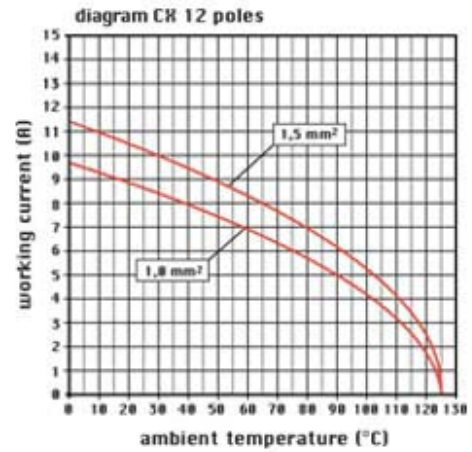
CX 12 DM



Catalogue drawings



Catalogue drawings



Notes

the modular inserts must be installed in suitable frames which in turn are installed in traditional housings or COB panel support